



TOOTH GEM

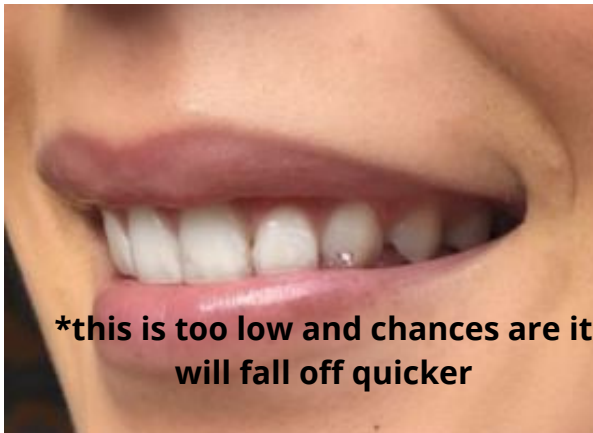
TIPS & TRICKS

2021

THE UNICORN & FINALLY WHITE

PLACEMENT

THE BEST VS THE WORST



Do not place your gems too close to the bottom of the teeth. The friction and force from chewing will be too much for the gem and bounce them off quicker. If you are placing it closer to the edge, make sure your tooth is etched properly and adequate bond is on.



Teeth further back also absorb a lot of force. Encourage your client to go no further back than 1 tooth directly behind the canine. Even that tooth increases the chance of coming off quicker.

PLACEMENT

THE BEST VS THE WORST



The best place for a tooth gem is the canine or incisor (in between front and canine) and in the middle.

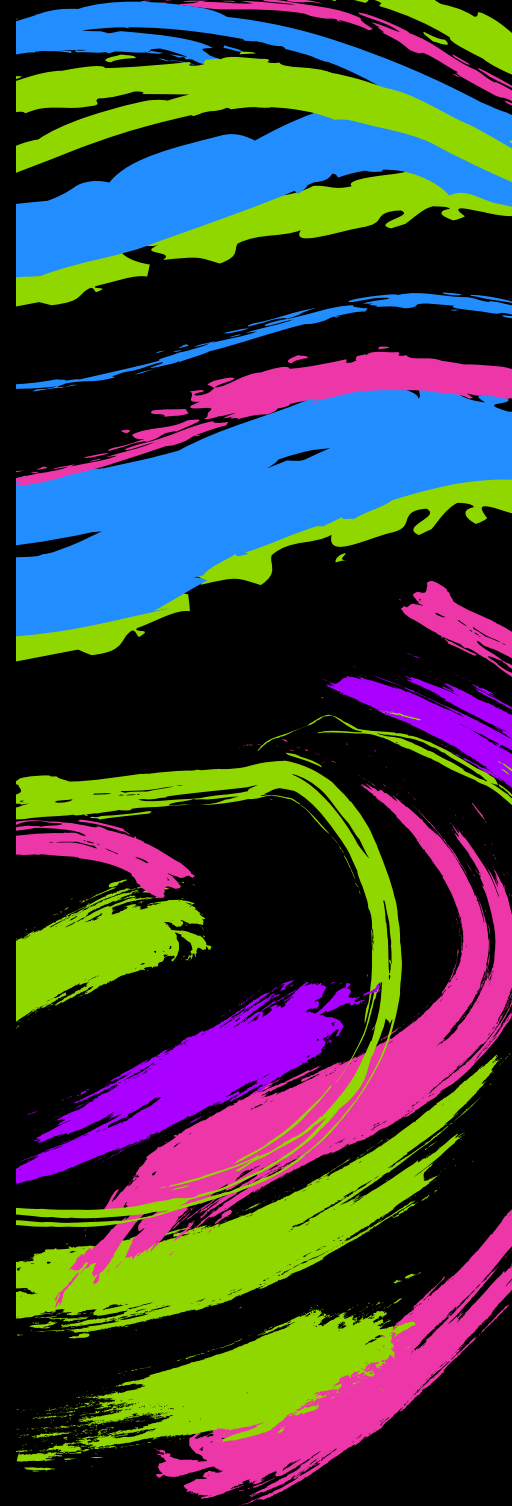


Placing tooth gems on the bottom must be done responsibly. This can cause bite issues if the top teeth are hitting the gems. This will also pop off the gems almost immediately. If a client cannot clear the space between the backs of their front teeth and the bottom, do not place gems on them.

CREATING DESIGNS & PATTERNS



When doing designs that are close like this, etch your entire surface together and work as one piece. Do not cure/prime individually. Work as one gem.



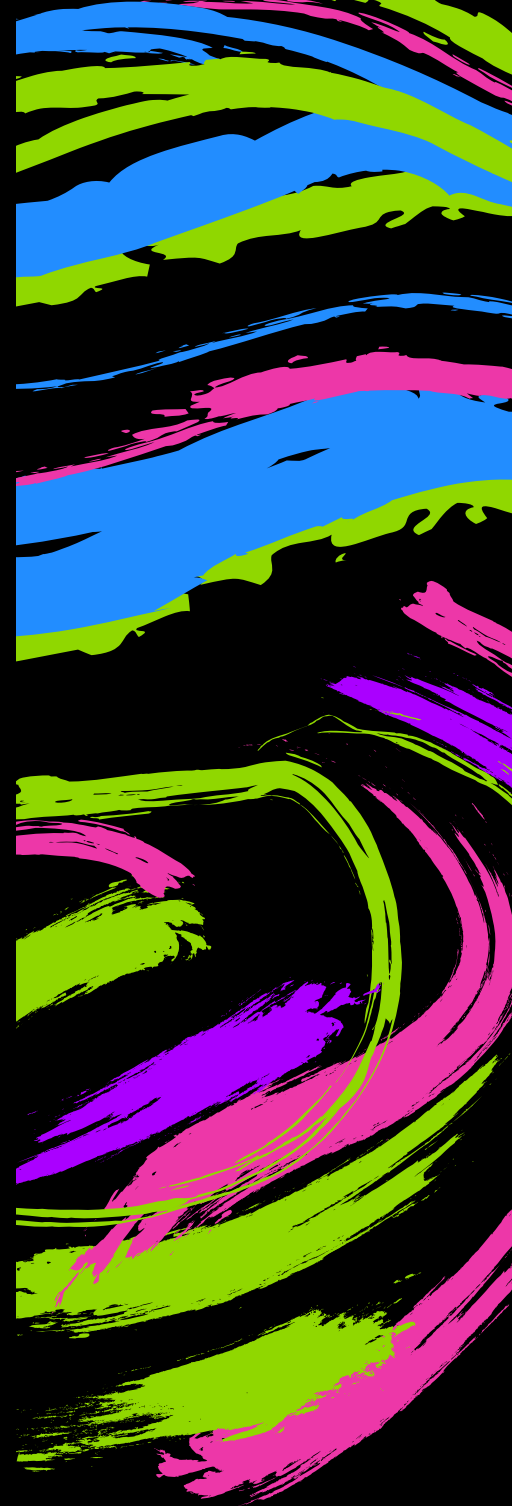
THE UNICORN

CREATING DESIGNS & PATTERNS



When doing designs that are the same tooth but a little further apart, do it individually. You do not want to etch more space than you need.

THE UNICORN



TOOTH GEMS

MULTIPLE TEETH



- **Do one tooth at a time. Leaving a tooth etched and exposed for longer than necessary increases the chances of your clients breathe/saliva depositing bacteria in the open enamel and could cause discoloration, cavities, gems to fall off quicker and problems for your client.**
- **Work responsibly and give your attention to one tooth at a time.**

APPLICATION

The diverse ways to apply



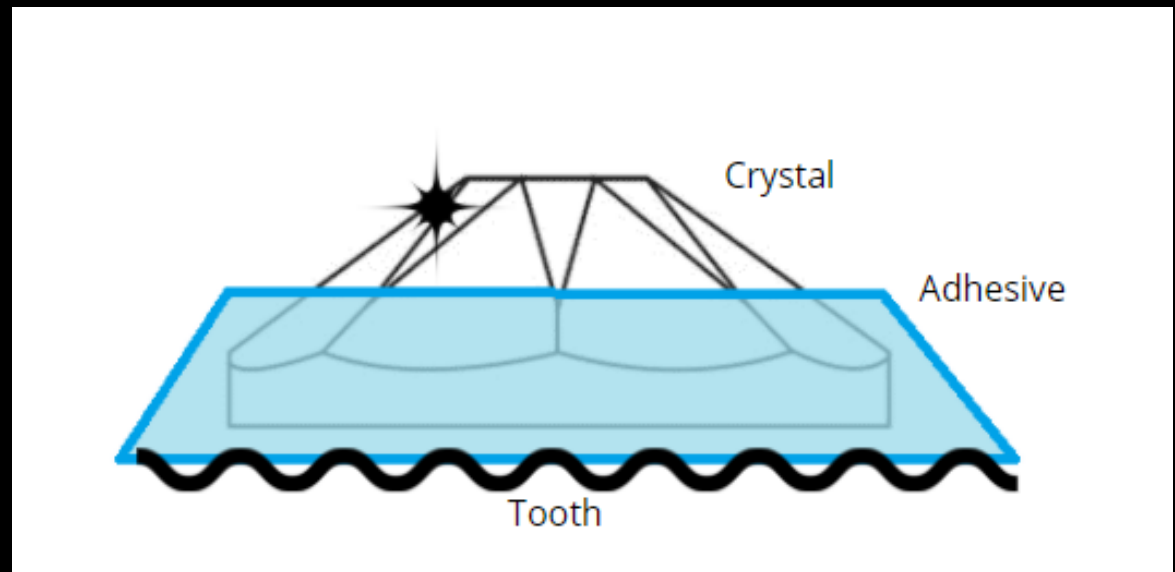
DISPENSING A TINY AMOUNT OF VASELINE INTO YOUR DISH CAN WORK AS A GREAT MEDIUM. SIMPLY USE THE OPPOSITE END OF A MICROBRUSH. LIGHTLY DIP IN VASELINE TO CREATE A WAX-LIKE STICKINESS THAT THE GEM WILL STICK TO. TWIST IT INTO PLACE ON THE TOOTH. SIMPLY DISPOSE A SMALL AMOUNT OF PETROLEUM JELLY INTO YOUR WELL OR WHEREVER YOU LIKE , DO NOT DIP YOUR BRUSH INTO A JAR AND RISK CROSS CONTAMINATION.



PRECISION TWEEZERS ARE EXTREMELY FINE TIPPED AND GREAT FOR PICKING UP CRYSTALS.

LOCKING IN YOUR GEMS

If you do not ensure that your bond/adhesive has come up around half way of your gems they will pop off the tooth leaving only the foil backing found on the Swarovski's. Locking your gems is the process of bringing your adhesive half up the gems, all around, to ensure it has been sealed into place.

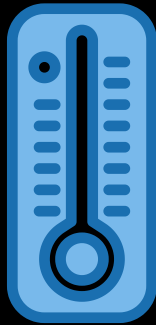


IF YOU ARE NOTICING GEMS ARE COMING OFF AND THE FOIL IS STILL SECURELY ATTACHED TO THE TOOTH, THIS MEANS IT WAS NOT LOCKED IN WITH ADHESIVE AROUND YOUR GEM.

TOOLS & TIPS



- Ensure your syringe tips are tightened on by pushing it down onto your syringes and twisting clockwise until tight



- Keep your etch and adhesives/primers at room temperature. Do not allow the product to get to warm or cold as it will ruin your products.
- Keep them out of the light, even ambient lighting as this can cure your products.



- Ensure your tooth is DRY. If you notice the tooth is getting wet from the gumline, stick a bud along the edge under the lip. Do not talk to your client as the tooth will get wet from the tongue pushing saliva forward and the cheeks producing moisture. Work quickly as your clients breathe will deposit moisture on their teeth as well.

CREATING PAVE/DISCOBALL/CHANDELIER

Approaches vary to this style, we like to work from the middle out. Create a line down the centre of the tooth with the Micro Swarovski's and work your way out. More detailed written instructions are included when Pave gems are purchased.

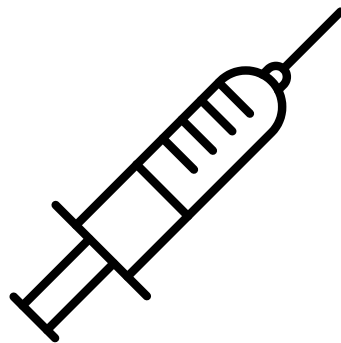


THE UNICORN

SYRINGE HACK

Gently pull back on the TEMPORARY/UNIVERSAL syringe after dispensing. This will suction some of the adhesive back into the syringe so it is not wasted.

STORING: Keep your syringes in a dark area, standing upright (so adhesives do not clog the tips) and at room temperature. These will stop working if its too hot or cold.





FAQ

**Don't forget to review the
common gem questions!**

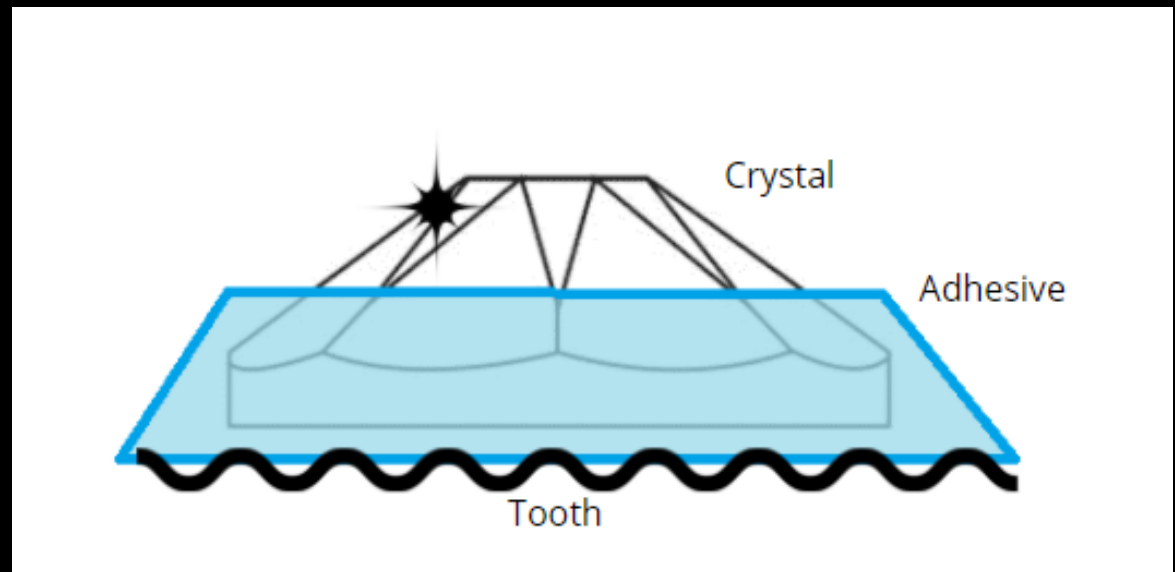
GIVE YOURSELF TIME

TOOTH GEMS ARE SIMPLE, BUT COME DOWN TO TECHNIQUE

Give yourself plenty of time (at least 6 months) to become confident with consistent gem application. Techniques vary and you are welcome to use any of ours including in this training and mix & match with other resources out there.

LOCKING IN YOUR GEMS

If you do not ensure that your bond/adhesive has come up around half way of your gems they will pop off the tooth leaving only the foil backing found on the Swarovski's. Locking your gems is the process of bringing your adhesive half up the gems, all around, to ensure it has been sealed into place.



IF YOU ARE NOTICING GEMS ARE COMING OFF AND THE FOIL IS STILL SECURELY ATTACHED TO THE TOOTH, THIS MEANS IT WAS NOT LOCKED IN WITH ADHESIVE AROUND YOUR GEM.